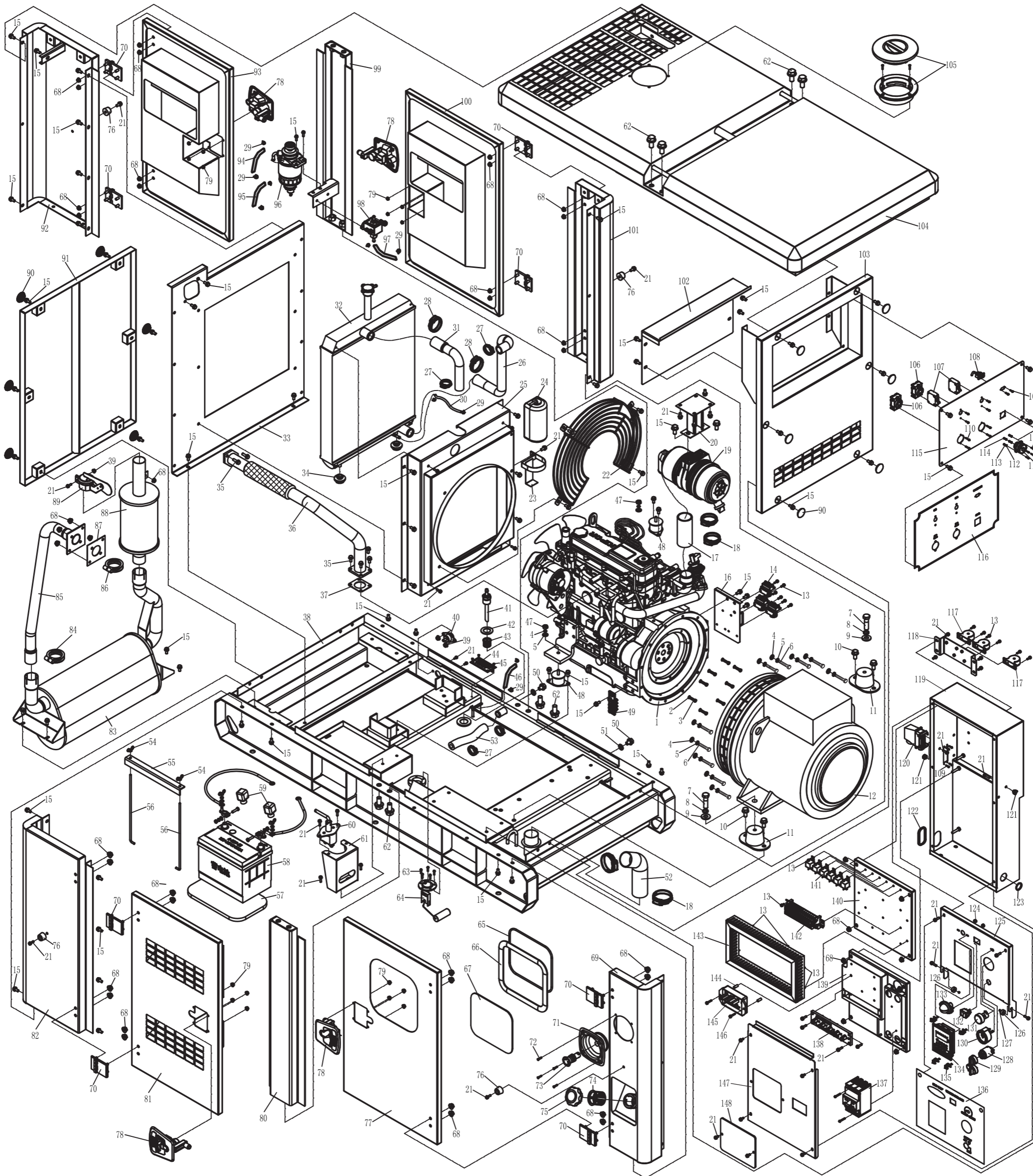


ASSEMBLY AND PARTS ALBUM

KDE23S3



No.	Part.No	Description	Qty.	No.	Part.No	Description	Qty.	No.	Part.No	Description	Qty.	No.	Part.No	Description	Qty.	No.	Part.No	Description	Qty.				
1	KD488A	Engine assembly	1	26	KDE15SS-11001	Water outlet pipe for water tank	1	51	QC/T638-2000	Sealing washer 12	2	76	KDE20LSS-0440000	Bumper block	4	101	KDE23SS3-0411000	Right side part for front skirt board	1	126	KDE285E3-09304	Washer	2
2	GB/T93-1987	Spring washer 6	8	27	QC/T619-1999	Worm driving soft clamp 25-38	4	52	KDE23SSP-0300002	Fuel filling connecting pipe	1	77	KDE23SS3-0730000	Left door plate 1	1	102	KDE35SS-B-0400002	Rear cover board for front skirt board	1	127	KDE115E3-09004	Nylon washer	2
3	GB/T5783-2000	Bolt M6×12	8	28	QC/T619-1999	Worm driving soft clamp 35-51	2	53	KDE20SS-01004	Fuel outlet pipe	1	78	014-1-12-03-01	Door lock	4	103	KDE23SS3-0413000	Front cover board for front skirt board	1	128	JK427-2	Lock	1
4	GB/T97.1-2002	Flat washer 10	12	29	QC/T619-1999	Worm driving soft clamp 13-19	10	54	GB/T62.1-2004	Wing nut M6	2	79	GB/T6177.1-2000	Nut M5	16	104	KDE23SS3-0810000	Top cover	1	129	JK427-1	Key	2
5	GB/T93-1987	Spring washer 10	12	30	KDE15SS-11004	Water drainage pipe for water tank	1	55	KDE500TW3-1700001	Battery pressing plate	1	80	KDE23SS3-0502000	Left pillar	1	105	SGX-130	Water tank cap	1	130	8211-12V	Fuel meter	1
6	GB/T5782-2000	Bolt M10×40	10	31	KDE500TW3-1100001	Water outlet pipe for water tank	1	56	KDE500TW3-1700002	Draw bar for pressing plate	2	81	KDE23SS3-0740000	Left door plate 2	1	106	YGB-008/30A/250V	Receptacle	2	131	RV24YN 20S-B102	Voltage micro adjust knob	1
7	GB/T5782-2000	Bolt M16×55	2	32	KDE27SS-1110000	Radiator tank	1	57	KDE15SS-18003	Rubber pad for battery	1	82	KDE23SS3-0612000	Left part of rear skirt board	1	107	D50-1620 36.9A	Breaker	2	132	RF 1004	Boat shape switch	1
8	GB/T93-1987	Spring washer 16	2	33	KDE23SS3-0614000	Separator for water tank	1	58	65AH-12V	Battery	1	83	KDE23SS3-1011000	Muffler	1	108	KP310-TTL	Communication connector	1	133	DC24V 10W	Control panel lamp	1
9	GB/T97.1-2002	Flat washer 16	2	34	KDE15SS-11200	Shock absorption block for water tank	2	59	KDE19ST43-13001D1	Battery wiring sheath (black 1 and red 1)	2	84	KDE15SS-10002	Double-circular board 2	1	109	GB/T818-2000	Screw M3×12	8	134	KP310V1.0	Intelligent controller	1
10	GB/T5789-2000	Bolt M12×20	4	35	GB/T5789-2000	Bolt M8×30	4	60	BOSCH 250A 24V	Battery breaker	1	85	KDE23SS3-1012000	Exhaust pipe of muffler	1	110	GB/T818-2000	Screw M3×20	8	135	KDE310-13600	Locating bolt for display	1
11	HC70	Shock absorption	2	36	KDE23SS3-1012000	Engine exhaust pipe	1	61	KDE23SS3-0340000	Mounting plate for battery breaker	1	86	KDE15SS-10001	Double-circular board 1	1	111	V50X-1608ZK10	Aviation receptacle	1	136	KDE23SS3-13121	Film	1
12	KFS25	Alternator assembly	1	37	KDE23SS3-1000001	Gasket	1	62	GB/T5789-2000	Bolt M16×35	8	87	KDE15SS-10004	Gasket	1	112	GB/T97.1-2002	Flat washer 3	4	137	ABB-T1 63A	Main breaker	1
13	GB/T5789-2000	Bolt M5×20	26	38	KDE23SS3-0310000	Chassis	1	63	GB/T818-2000	Screw M5×20	5	88	KDE17SSP-1020000	Muffler 2	1	113	GB/T93-1987	Spring washer 3	4	138	KDE28SS3R400-13500	Output board assembly	1
14	QDC-100A DC12V	DC contactor	3	39	GB/T6177.1-2000	Nut M6	3	64	YWJ-01	Fuel sensor	1	89	KDE20SSP-10020	Water-proof cap	1	114	GB/T6170-2000	Nut M3	4	139	KDE23SS3-0910300	Breaker mounting plate	1
15	GB/T5789-2000	Bolt M8×20	67	40	KDE15SS-03010	Water and fuel outlet seal	1	65	KDE35SSP-04002	Rubber strap	1	90	KDE23SS3-0720000	Water-proof cap	12	115	KDE46SS3CH-13410	Transformer mounting board	1	140	KDE55SSP-0910200	Electrical parts mounting plate	1
16	KDE23SS3-0320000	Mounting plate for DC contactor	1	41	KDE23SS3-1401000	Fuel outlet connector	1	66	KDE35SSP-04001	Sealing strap	1	91	KDE23SS3-0413000	Front cover board for front skirt board	1	116	KDE46SS3CH-13412	Receptacle film	1	141	HFV4 12V 20A	Relay	6
17	KDE23SS3-0100001	Air outlet pipe for air filter	1	42	QC/T638-2000	Sealing washer 30	1	67	KDE20LSS-a-0400001	Organic glass for instrument door	1	92	KDE23SS3-0611000	Right side board for rear skirt board	1	117	50/5mA	Current transformer	3	142	KDE23SS3-13041	Wiring terminal	1
18	GB/T619-1999	Worm driving soft clamp 51-70	4	43	KDE180E3-14003	Filter strainer	1	68	GB/T6177.1-2000	Nut M8	45	93	KDE23SS3-0720000	Right door plate 2	1	118	KDE36SSP-0910400	Transformer mounting plate	1	143	30×40	Wire slot	1
19	KDE15SS-01200	Air filter assembly	1	44	KDE23SS3-0412000	Nameplate	1	69	KDE23SS3-0412000	Left part of front skirt board	1	94	KDE23SS3-1400001	Fuel inlet pipe 1	1	119	KDE23SS3-0910100	Electrical box	1	144	KGE12E-09008	AVR tube casing	2
20	KDE23SS3-0820000	Air filter bracket	1	45	GB/T869-1986	Rivet M4×6	4	70	CL.226-1A	Hinge chain	8	95	KDE23SS3-1400002	Fuel inlet pipe 2	1	120	R-A-H-D-P-25	Heavy load connector	1	145	K1-DAVR-250S	AVR	1
21	GB/T5789-2000	Bolt M6×20	40	46	KDE23SS3-1400004	Fuel returning pipe	1	71	ES001	Housing for emergency stop	1	96	DX200M	Fuel & water separator	1	121	KDE5000E-09005	Ground nut	2	146	GB/T5789-2000	Bolt M6×35	2
22	KDE20SS-06010	Protective plate for water tank	1	47	GB/T6170-2000	Nut M10	2	72	GB/T819-2000	Screw M5×20	5	97	KDE23SS3-1400003	Fuel inlet pipe 3	1	122	HMB-020	Wire protective bushing	1	147	KDE46SS3-0904000	Cover board for electrical control box	1
23	KDE20LSS-b-0604000	Water pot mounting plate	1	48	KDE15SS-12100	Shock absorption	2	73	CE4T-10R-11	Emergency stop button	1	98	KD388-10500	Electrical fuel supply pump 2	1	123	Φ30	Protective ring	1	148	KDE36SSP-0910002	Cover board	1
24	KDE19T3-10001	Anti-freezing fluid pot	1	49	KDE60SS-13500	Bus bar and attachment	1	74	KDE35ST-14006	Fuel tank strainer	1	99	KDE23SS3-0501000	Right pillar	1	124	GB/T6170-2000	Nut M4	2	149			
25	KDE23SS3-0615000	Protective plate for water tank	1	50	GB/T5789-2000	Bolt M12×1.75×12	2	75	KDE35ST-14020	Fuel tank cap(with key)	1	100	KDE23SS3-0710000	Right door plate 1	1	125	KDE46SS3-13110	Instrument door	1	150			