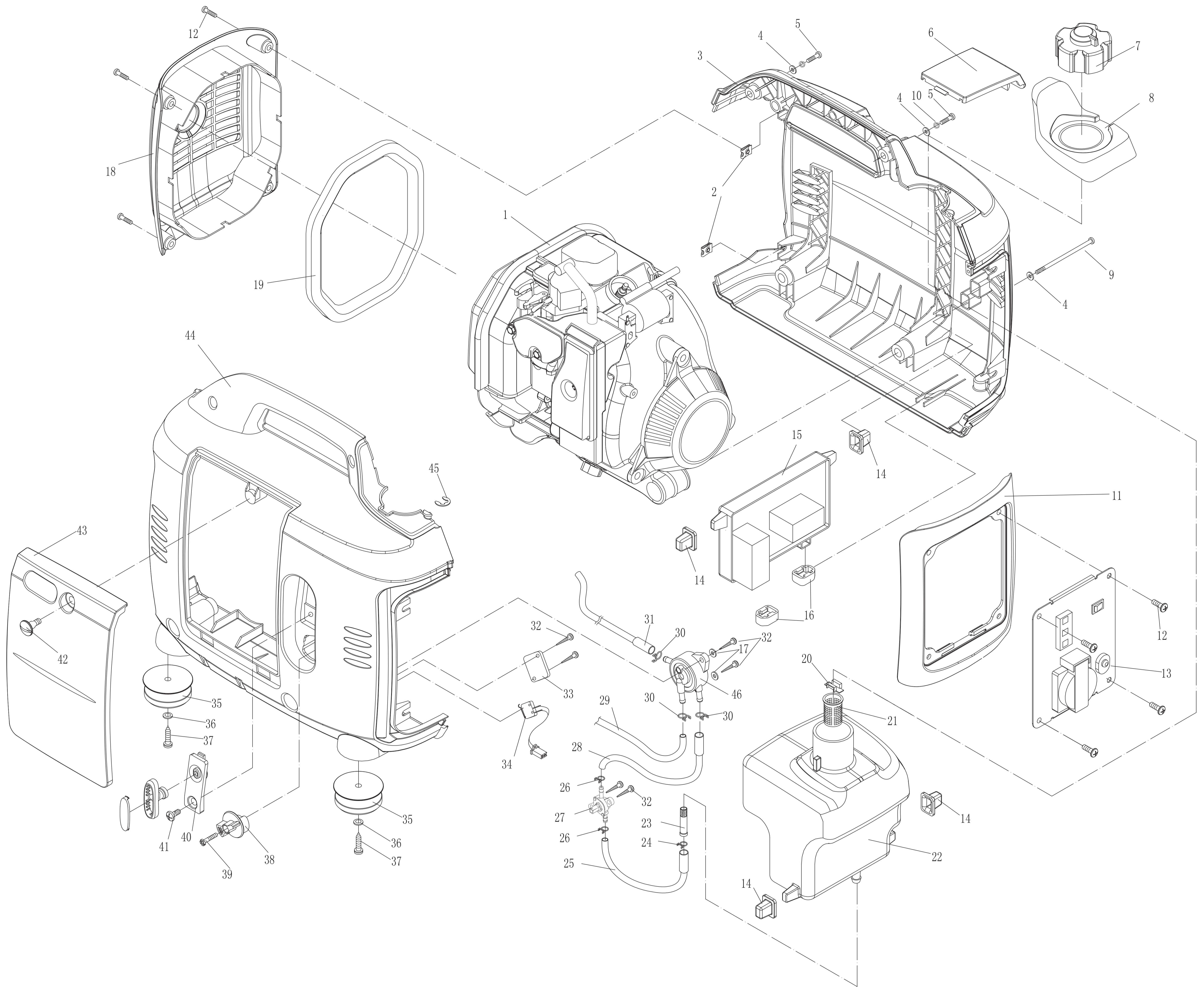


# Assembly and spare parts of IG770



| No. | Drawing No.     | Name                             | Qty. | No. | Drawing No.       | Name                            | Qty. | No. | Drawing No.     | Name                         | Qty. | No. | Drawing No.     | Name                                | Qty. | No. | Drawing No.     | Name                            | Qty. |
|-----|-----------------|----------------------------------|------|-----|-------------------|---------------------------------|------|-----|-----------------|------------------------------|------|-----|-----------------|-------------------------------------|------|-----|-----------------|---------------------------------|------|
| 1   | KG140-00000     | Engine                           | 1    | 11  | KGE980Tc-03013    | Front enclosure                 | 1    | 21  | KGE1000Ti-07011 | Filter cup                   | 1    | 31  | KGE980Tc-07006  | Oil pipe 3 (vacuum pump-carburetor) | 1    | 41  | GB/T818-2000    | Screw M5X12                     | 1    |
| 2   | IG770-03800     | Insert parts                     | 8    | 12  | GB/T818-2000      | Screw M5x16                     | 8    | 22  | KGE980Tc-07003  | Oil tank                     | 1    | 32  | GB/T845-1985    | Screw ST3.8X16                      | 6    | 42  | KGE1000Ti-00006 | Screw M6                        | 1    |
| 3   | KGE980Tc-03300  | Right enclosure and insert parts | 1    | 13  | IG770R230CE-13000 | Unit of electric gage           | 1    | 23  | KGE1000Ti-07004 | Filter                       | 1    | 33  | KGE3000Ti-03017 | Inching switch plate                | 1    | 43  | KGE980Tc-03014  | Side door                       | 1    |
| 4   | GB/T818-2002    | Washer 6                         | 4    | 14  | KGE1000Ti-00004   | Rubber protector                | 4    | 24  | KGE1000Ti-07012 | Hoop φ 10                    | 1    | 34  | KW4A-Z6CSF200   | Inching switch                      | 1    | 44  | KGE980Tc-03400  | Left enclosure and insert parts | 1    |
| 5   | GB/T818-2000    | Screw M6x20                      | 2    | 15  | DU07-A            | Inverter module                 | 1    | 25  | KGE3000Ti-07001 | Oil pipe 1 (switch-oil tank) | 1    | 35  | KGE2000Ti-03004 | Pad                                 | 4    | 45  | GB/T896-1986    | Retainer ring 8                 | 1    |
| 6   | KGE980Tc-03015  | Skylight cover                   | 1    | 16  | KGE1000Ti-00008   | Cushion                         | 2    | 26  | KGE1000Ti-07006 | Hoop φ 7                     | 2    | 36  | GB/T96.1-2002   | Washer 6                            | 4    | 46  | KGE1000Ti-07100 | Vacuum pump                     | 1    |
| 7   | KGE1000Ti-07200 | Oil tank cap                     | 1    | 17  | GB/T97.1-2002     | Washer 4                        | 2    | 27  | KGE1000Ti-07300 | Unit of oil switch           | 1    | 37  | GB/T845-1985    | Screw ST5.5X19                      | 4    |     |                 |                                 |      |
| 8   | KGE980Tc-07001  | Washer for oil tank filler       | 1    | 18  | KGE980Tc-03200    | Back enclosure and insert parts | 1    | 28  | KGE1000Ti-07002 | Oil pipe 2 (switch-pump)     | 1    | 38  | KGE1000Ti-07008 | Oil switch handle                   | 1    |     |                 |                                 |      |
| 9   | KGE1000Ti-00007 | Bolt M6x105                      | 2    | 19  | KGE980Tc-03001    | Sealing part                    | 1    | 29  | KG140-01017     | Vacuum tube                  | 1    | 39  | KGE1000Ti-07304 | Screw                               | 1    |     |                 |                                 |      |
| 10  | GB/T93-1987     | Elastic washer 6                 | 2    | 20  | KGE1000Ti-07013   | Oil level indicator             | 1    | 30  | KGE1000Ti-07007 | Hoop φ 9                     | 3    | 40  | KGE1000Ti-06102 | Fixing seat for lever               | 1    |     |                 |                                 |      |